

## Ongoing Activities

03/18/19 – 03/22/19

- Exterior framing at east side elevations
- Metal panel installation on elevations B, C and D
- Installing 3<sup>rd</sup> level west and main east overhead MEP
- Second and third level framing and one-side drywall in progress
- Roofing roof 5 over 2<sup>nd</sup> east
- Ceiling grid in lower level
- South and east stair install
- Epoxy flooring in kitchen

## Upcoming Activities

- Complete 1<sup>st</sup> two layers of all roofing
- Walk-in cooler install
- Continue ceiling grid in lower level
- In-wall inspections for main and 2<sup>nd</sup> west
- Gang bathroom walls on 3<sup>rd</sup> floor

## Financial & Schedule Status

Current GMP = \$27.6M

Start Date: July 2, 2018

Bill to Date = \$13,602,850

Current Completion Date:  
July 10, 2019

## Project Overview



Photo of the project site from southeast corner, site of future playfield

## Safety Sector

### HEAT STRESS INJURIES

|   |  |
|---|--|
| <b>HEAT RASH</b> <ul style="list-style-type: none"> <li>• Red raised rash</li> <li>• Impairs sweating and decreases effectiveness of sweating</li> </ul>  | <b>HEAT CRAMPS</b> <ul style="list-style-type: none"> <li>• Muscle cramps, pain or spasms in the abdomen, arms or legs</li> </ul>  |
| <b>HEAT EXHAUSTION</b> <ul style="list-style-type: none"> <li>• Moist, clammy skin</li> <li>• Dilated pupils</li> <li>• Normal or subnormal temperature</li> <li>• Dizziness, confusion and/or nausea</li> <li>• Weak pulse</li> <li>• Rapid breathing</li> </ul> | <b>HEAT STROKE</b> <ul style="list-style-type: none"> <li>• Dry, red, hot skin</li> <li>• Pupils constricted</li> <li>• Very high body temperature</li> <li>• Dizziness, confusion and/or nausea</li> <li>• Pulse rapid</li> <li>• Unconsciousness</li> <li>• Coma</li> <li>• Death</li> </ul> |

## Water. Rest. Shade

Every year, hundreds of construction workers are negatively affected while working in extreme heat. OSHA provides protective measures ([link](#)) to be taken at each risk level, and should be implemented to reduce the risk of heat injury.



Form work for retaining wall outside of gymnasium



Retaining wall for ramp walkway at lower level entrance



East stair install ongoing



Fluid applied at east end of classroom corridor (Elevation H)



Soffit sheathing in progress on Elevation I



Z-girt installation for metal panels in progress on Elevation F



3<sup>rd</sup> floor gang restroom rough in



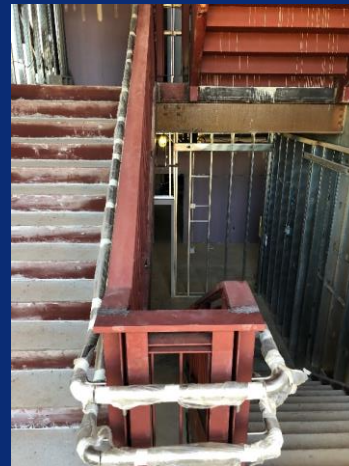
Overhead MEP work starting on main east



STEM lab and music room interior walls starting



Interior HM window frames overlooking gymnasium installed



Stainless steel handrails installed on west stair



Block walls at 2<sup>nd</sup> floor restroom in progress